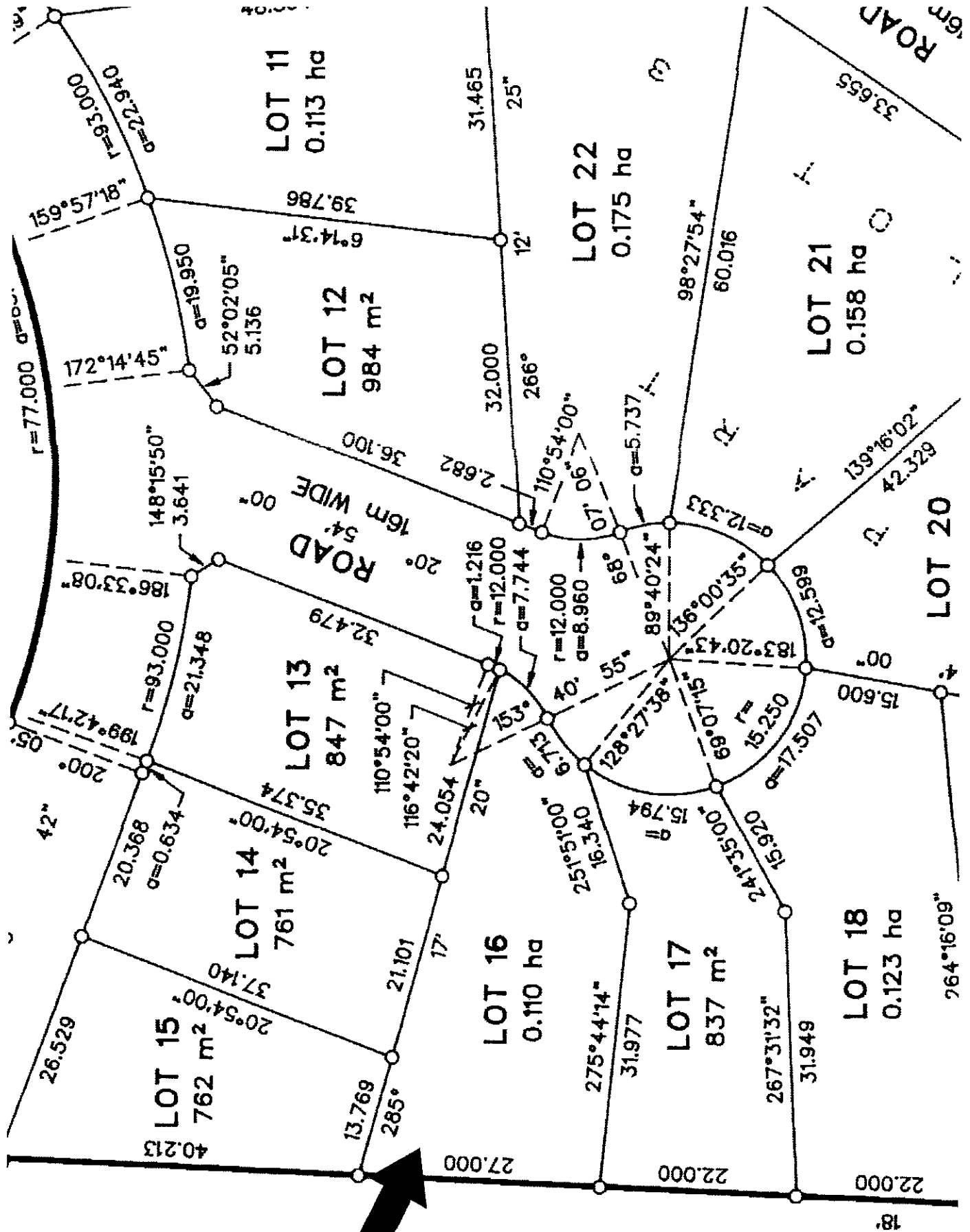


PART
:MANDER
LOT 4
.AN 1540



ROAD
6m

33.655

LOT 21
0.158 ha

LOT 22
0.175 ha

LOT 11
0.113 ha

LOT 12
984 m²

ROAD
16m WIDE

LOT 13
847 m²

LOT 14
761 m²

LOT 15
762 m²

LOT 16
0.110 ha

LOT 17
837 m²

LOT 18
0.123 ha

LOT 20

264°16'09"

18

22.000

22.000

27.000

13.769

20°54'00"

37.140

26.529

20°54'00"

40.213

20.368

200°

189°42'17"

r=93.000

186°33'08"

148°15'50"

172°14'45"

r=81.75°651

r=93.000

r=81.75°651

31.465

25°

6°14'37"

39.786

32.000

266°

36.100

2.682

110°54'00"

07°06'00"

alpha=5.737

98°27'54"

60.016

alpha=12.333

139°16'02"

42.329

15.600

alpha=21.589

17.507

15.250

15.920

24°35'00"

15.794

25°51'00"

16.340

275°44'14"

31.977

267°31'32"

31.949

15.800

183°20'43"

36°00'33"

89°40'24"

68°

alpha=12.000

alpha=8.960

alpha=7.744

alpha=1.216

r=12.000

alpha=7.744

alpha=12.000

alpha=8.960

alpha=7.744

alpha=1.216

r=12.000

alpha=8.960

alpha=7.744

alpha=1.216

r=12.000

alpha=8.960

alpha=7.744

alpha=1.216

r=12.000

alpha=8.960

alpha=7.744

alpha=1.216

r=12.000

alpha=8.960

alpha=7.744

alpha=1.216

r=12.000

alpha=8.960

alpha=7.744

alpha=1.216

r=12.000

alpha=8.960

alpha=7.744

alpha=1.216

r=12.000

alpha=8.960

alpha=7.744

alpha=1.216

r=12.000

alpha=8.960

alpha=7.744

alpha=1.216

r=12.000

alpha=8.960

alpha=7.744

alpha=1.216

r=12.000

alpha=8.960

alpha=7.744

alpha=1.216

r=12.000

alpha=8.960

alpha=7.744

alpha=1.216

r=12.000

alpha=8.960

alpha=7.744

alpha=1.216

r=12.000

alpha=8.960

alpha=7.744

alpha=1.216

r=12.000

alpha=8.960

alpha=7.744

alpha=1.216

r=12.000

alpha=8.960

alpha=7.744

alpha=1.216

r=12.000

alpha=8.960

alpha=7.744

alpha=1.216

r=12.000

alpha=8.960

alpha=7.744

alpha=1.216

r=12.000

alpha=8.960

alpha=7.744

alpha=1.216

r=12.000

alpha=8.960

alpha=7.744

alpha=1.216

r=12.000

alpha=8.960

alpha=7.744

alpha=1.216

r=12.000

alpha=8.960

alpha=7.744

alpha=1.216

r=12.000

alpha=8.960

alpha=7.744

alpha=1.216

r=12.000

alpha=8.960

alpha=7.744

alpha=1.216

r=12.000

alpha=8.960

alpha=7.744

alpha=1.216

r=12.000

alpha=8.960

alpha=7.744

alpha=1.216

r=12.000

alpha=8.960

alpha=7.744

alpha=1.216

r=12.000

alpha=8.960

alpha=7.744

alpha=1.216

r=12.000

alpha=8.960

alpha=7.744

alpha=1.216

r=12.000

alpha=8.960

alpha=7.744

alpha=1.216

r=12.000

alpha=8.960

alpha=7.744

alpha=1.216

r=12.000

alpha=8.960

alpha=7.744

alpha=1.216

r=12.000

alpha=8.960

alpha=7.744

alpha=1.216

r=12.000

alpha=8.960

alpha=7.744

alpha=1.216

r=12.000

alpha=8.960

alpha=7.744

alpha=1.216

r=12.000

alpha=8.960

alpha=7.744

alpha=1.216

r=12.000

alpha=8.960

alpha=7.744

alpha=1.216

r=12.000

alpha=8.960

alpha=7.744

alpha=1.216

r=12.000

alpha=8.960

alpha=7.744

alpha=1.216

r=12.000

alpha=8.960

alpha=7.744

alpha=1.216

r=12.000

alpha=8.960

alpha=7.744

alpha=1.216

r=12.000

alpha=8.960

alpha=7.744

alpha=1.216

r=12.000

alpha=8.960

alpha=7.744

alpha=1.216

r=12.000

alpha=8.960

alpha=7.744

alpha=1.216

r=12.000

alpha=8.960

alpha=7.744

alpha=1.216

r=12.000

alpha=8.960

alpha=7.744

alpha=1.216

r=12.000

alpha=8.960

alpha=7.744

alpha=1.216

r=12.000

alpha=8.960

alpha=7.744

alpha=1.216

r=12.000

alpha=8.960

alpha=7.744

alpha=1.216

r=12.000

alpha=8.960

alpha=7.744

alpha=1.216

r=12.000

alpha=8.960

alpha=7.744

alpha=1.216

r=12.000

alpha=8.960

alpha=7.744

alpha=1.216

r=12.000

alpha=8.960

alpha=7.744

alpha=1.216

r=12.000

alpha=8.960

alpha=7.744

alpha=1.216

r=12.000

alpha=8.960

alpha=7.744

alpha=1.216

r=12.000

alpha=8.960

alpha=7.744

alpha=1.216

r=12.000

alpha=8.960

alpha=7.744

alpha=1.216

r=12.000

alpha=8.960

alpha=7.744

alpha=1.216

r=12.000

alpha=8.960

alpha=7.744

alpha=1.216

r=12.000

alpha=8.960

alpha=7.744

alpha=1.216

r=12.000

alpha=8.960

alpha=7.744

alpha=1.216

r=12.000

alpha=8.960

alpha=7.744

alpha=1.216

r=12.000

alpha=8.960

alpha=7.744